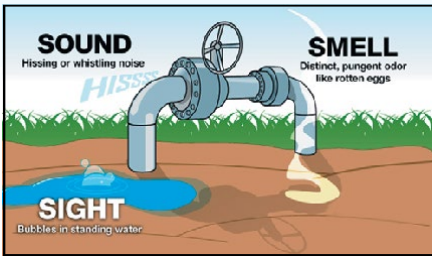


Public Awareness Safety Message

Attention: Even if you do not have natural gas service there may be a natural gas pipeline on or near your property.

PLEASE READ THIS MESSAGE.

Natural gas is an extremely safe form of energy and is transported to industrial, commercial and residential customers by buried pipelines. Natural gas pipelines are built and operated in accordance with State and Federal Safety Codes. Pipelines are a reliable and safe method to transport natural gas.



Homeowners and Excavators are required by law to “call before you dig.” Always call 811 before you dig. It is a free call and there is no cost to the homeowner to have underground utilities located. You are required to call at least 48 hrs. in advance of digging in Indiana. The 811 number is good everywhere. The utility companies will mark the underground facilities with paint and flags. You are required to hand dig test holes carefully to

determine the exact location and depth of the buried utility. Damage to natural gas lines may cause leakage resulting in a fire or an explosion. Natural gas has a chemical additive that gives it a familiar “rotten egg” odor; however smelling natural gas is not the only method of detecting a gas leak. A gas leak may be indicated by observing dirt blowing on the ground, bubbling in a water puddle or an unusual area of dead vegetation. You may also hear a hissing sound.

If you suspect a natural gas leak call 911 and the Natural Gas Emergency number below. Gas companies work with emergency responders and state and local agencies to prevent and prepare for emergencies. They maintain up to date operations and maintenance procedures that are made available to local and state authorities. Gas companies are required to perform pressure tests on pipelines before they are put in service. Federal codes require periodic leak surveys to locate leaks so they may be repaired before they become hazardous.

If you suspect the presence of carbon monoxide (CO) in your home, call 911, open windows and if necessary, leave your residence. The presence of CO is an indication of a malfunctioning gas, propane oil or wood-burning appliance. It is not caused by a gas leak.

For additional natural gas safety information visit:

www.safegasohio.org
www.utilitypipelineltd.com

For a list of pipeline operators in your area go to:

www.npms.rspa.dot.gov

Natural Gas Emergency

1-888-784-6160

